

Thank you for purchasing AUTEL tool. Manufactured to a high standard, our tool will, if used according to these instructions and properly maintained, give you years of trouble-free performance.

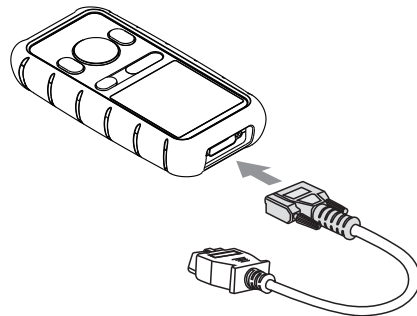
Getting Started



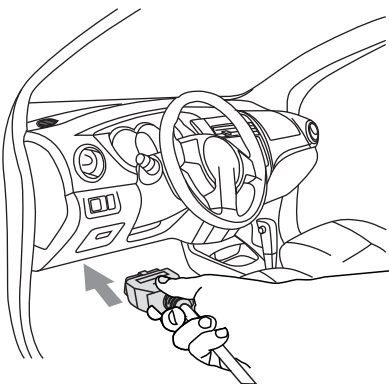
IMPORTANT: Before operating or maintaining this unit, please read these instructions carefully. Use this unit correctly and properly. Failure to do so may cause damage and/or personal injury and will void the product warranty.

1

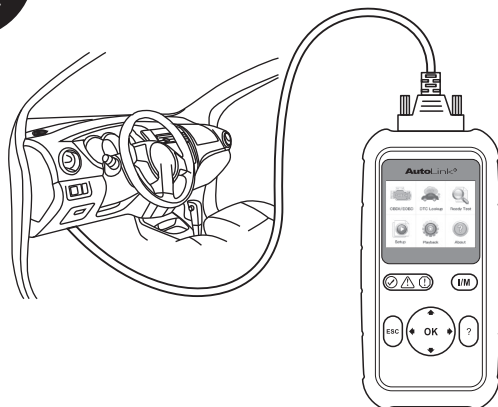
- Scan QR Code to visit our website at www.autel.com.
- Create an Autel ID and register the product with device's SN and password.

2

- Connect the OBD II cable's female adapter to the AutoLink AL529/AL529HD
- Tighten the captive screws.

3

- Connect the OBD II cable's 16-pin male adapter to the Vehicle's DLC which is generally located under the vehicle dash.
- The device will be automatically powered up.

4

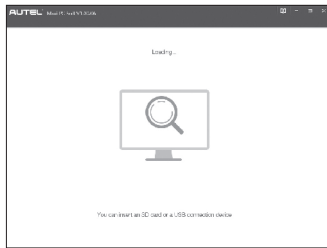
- Your AutoLink AL529/AL529HD is now ready to work.



Please download the Maxi PC Suite from

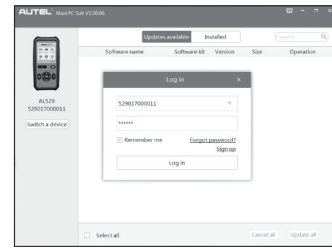
Software Update and Delete

1



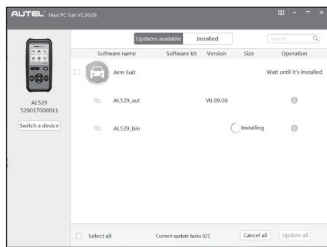
- Run the Maxi PC Suite. Wait for the Log In window to display.
- Connect the device with the computer using the included USB cable.
- Select Update Mode in the tool.

2



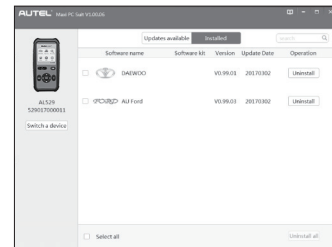
- Enter your Autel ID and password and wait for the Update window to display. If you forget your password, click the [Forget Password?] link to our website and retrieve your password. Or click Sign up to create an Autel ID to continue.
- Select tool and serial number, click OK to continue.

3



- In the Update window, select the appropriate files to install.

4



- Click on the Installed tag and the list of installed programs will display.
- Select the program(s) you would delete.

Data Printing

- Connect the device to the computer with the USB cable supplied.
- Run Autel Printer on the computer which is installed after the installation of Maxi PC Suite.
- Select Playback function in the Main Screen of the tool. On the data menu screen, use the UP/DOWN scroll button to select the data you want to print. Wait for the review window to display, and then select Print function.
- The selected data will display on the textbox of the Autel Printer. By selecting the function keys on the right, you could execute the following operations:
 - Print – print all data in the textbox. (A printer should be connected to the computer.)
 - Edit – display an editable NOTEPAD window with recorded data.
 - Copy – copy data in the textbox to the clipboard.
 - Clear – delete data in the textbox.
 - Exit – quit the operation.